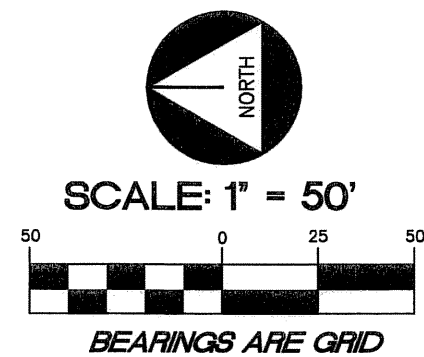


BOYNTON TOWN CENTER, A P.C.D.

A REPLAT OF A PORTION OF LOTS 68 THROUGH 93, THE ABANDONED ROAD RIGHT-OF-WAY ADJACENT TO SAID LOTS, LAKE BESSIE AND THE UNNUMBERED LANDS ADJACENT TO LAKE BESSIE
 "PALM BEACH-MIAMI LAND AND DEVELOPMENT COMPANY SUBDIVISION OF SECTION 29 AND 20, TOWNSHIP 45 SOUTH, RANGE 43 EAST"
 PLAT BOOK 7, PAGE 20 OF THE PUBLIC RECORDS OF PALM BEACH COUNTY, FLORIDA

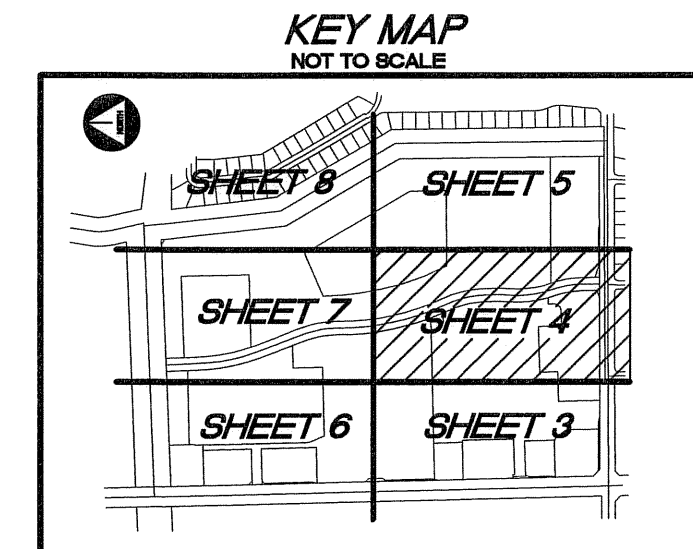
CITY OF BOYNTON BEACH, PALM BEACH COUNTY, FLORIDA
 NOVEMBER, 2005

PREPARED BY:
 WILLIAM S. PAYNE, PSM
WSP Consultants, Inc.
 SURVEYORS & MAPPERS
 18815 ANNELIS DRIVE, LUTZ, FL 33548
 PHONE (813) 264-7540 FAX (813) 964-8760
 CERTIFICATE OF AUTHORIZATION NO.: LB 7188



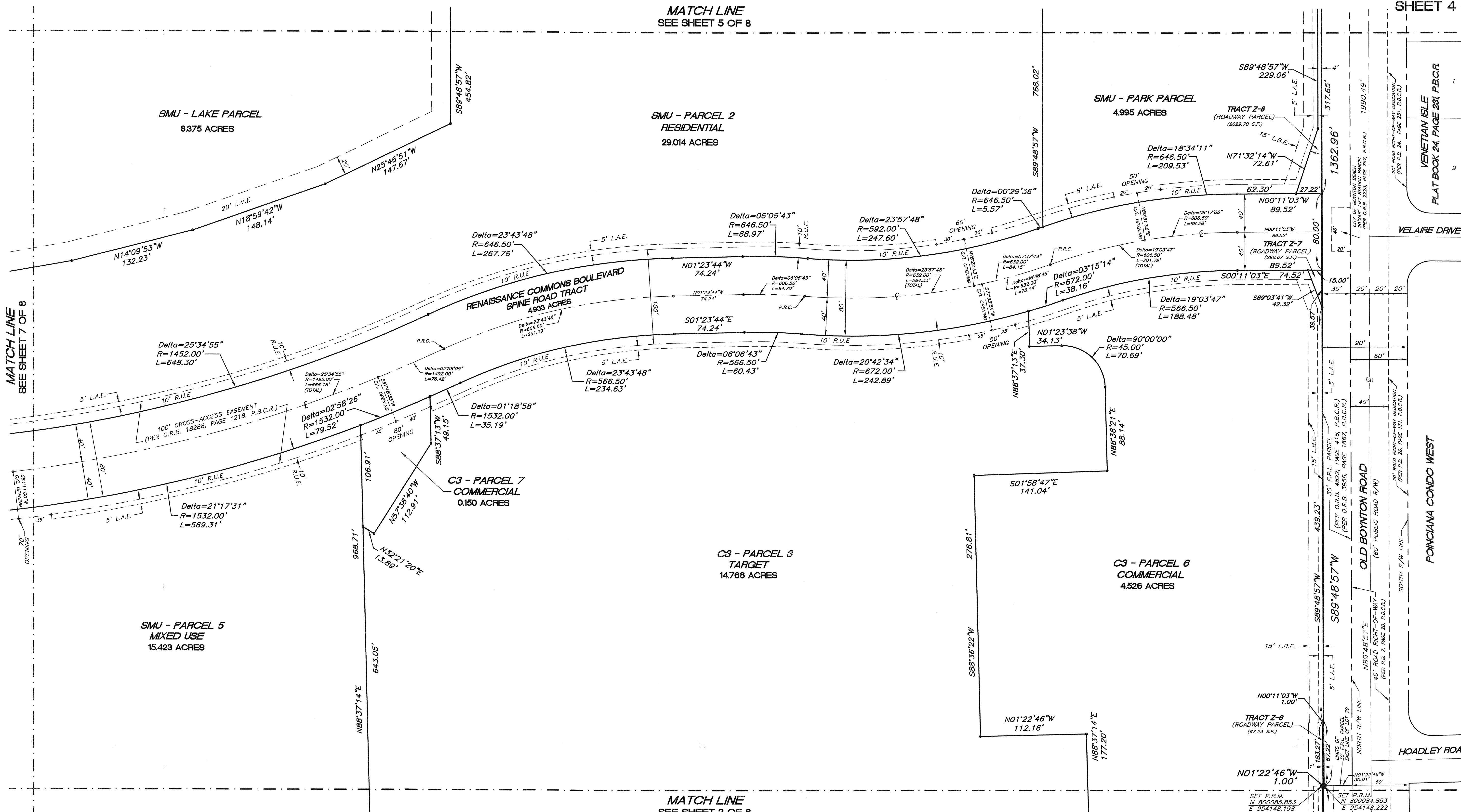
LEGEND

- SET P.R.M. (UNLESS OTHERWISE NOTED)
 4" X 4" CONCRETE MONUMENT WITH
 2" DIAMETER ALUMINUM DISK
 STAMPED "P.R.M." L.B. # 7188
- P.O.C. POINT OF COMMENCEMENT
- P.O.B. POINT OF BEGINNING
- P.B.C.R. PALM BEACH COUNTY RECORDS
- P.R.M. PERMANENT REFERENCE MONUMENT
- F.P.L. FLORIDA POWER & LIGHT
- O.R.B. OFFICIAL RECORD BOOK
- P.B. PLAT BOOK
- R/W RIGHT-OF-WAY
- Delta CENTRAL ANGLE
- R RADIUS
- L ARC LENGTH
- C/L CENTERLINE
- S.F. SQUARE FEET
- P.C.C. POINT OF COMPOUND CURVATURE
- P.R.C. POINT OF REVERSE CURVATURE
- L.A.E. LIMITED ACCESS EASEMENT
- L.B.E. LANDSCAPE BUFFER EASEMENT
- L.M.E. LAKE MAINTENANCE EASEMENT
- R.U.E. ROAD AND UTILITY EASEMENT
- ¢ CENTERLINE



147

SHEET 4 OF 8



MATCH LINE
 SEE SHEET 3 OF 8

MATCH LINE
 SEE SHEET 7 OF 8

MATCH LINE
 SEE SHEET 5 OF 8

SET P.R.M. N 800088.853 E 954148.222
 SET P.R.M. N 800088.853 E 954148.222